



PUTTERILLS

est. 1992

**£2,300 PCM**  
**Milestone Road**  
Knebworth, SG3 6DA



## PROPERTY SUMMARY

This generously proportioned red brick halls-adjoint semi detached Edwardian house boasts a central village setting & private southerly facing rear garden in excess of 100'. This property enjoys an abundance of character features typical of the Edwardian era and includes ornate fireplaces, stripped pine internal doors and picture rails. Approached via a deep entrance hall, the accommodation comprises: comfortable sitting room with bay window, a superb contemporary kitchen with bi-fold doors providing access to the garden, walk in pantry, utility room, cloakroom with sizeable shower, 3 first floor bedrooms and a family bathroom. Staircase rising to the 2nd floor and a further bedroom

4



2



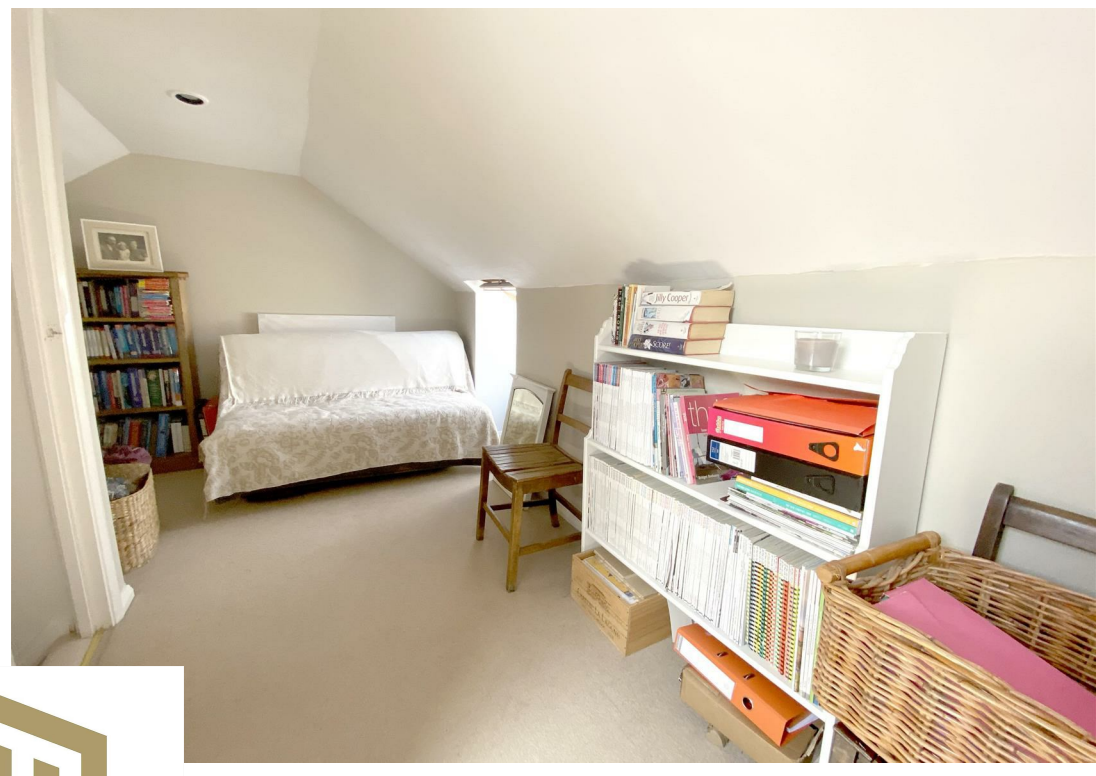
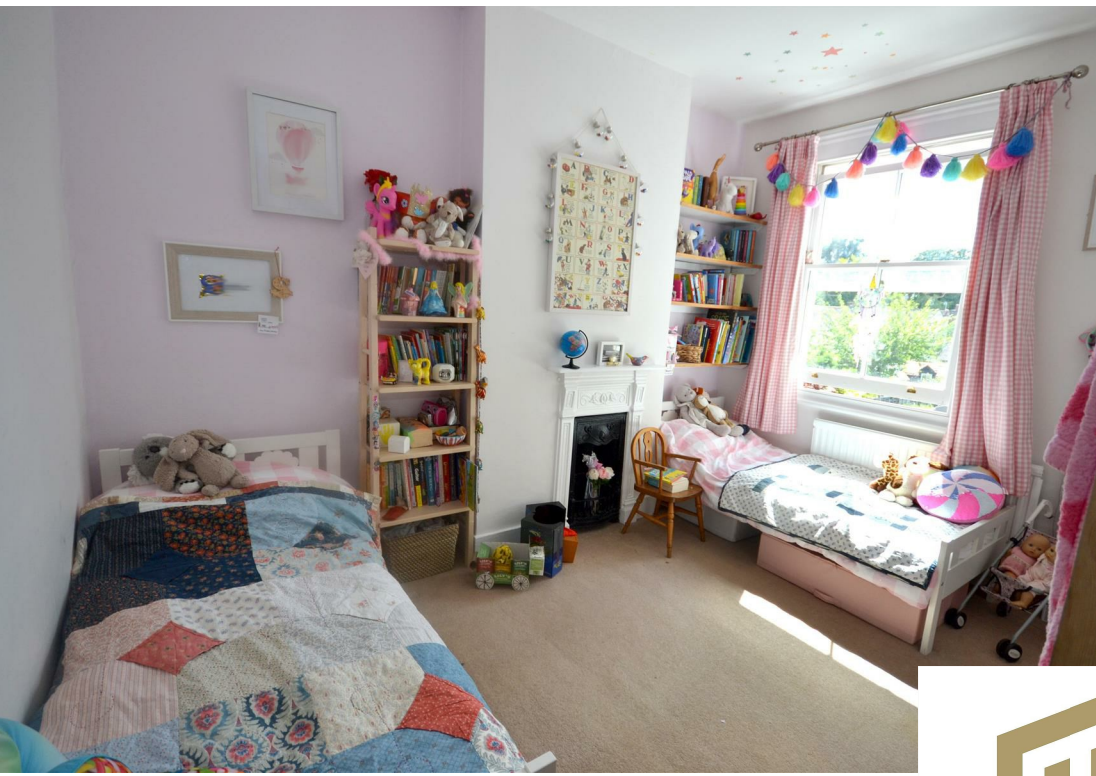
2











PUTTERILLS  
LETTINGS  
est. 1992









**LOCAL AUTHORITY**

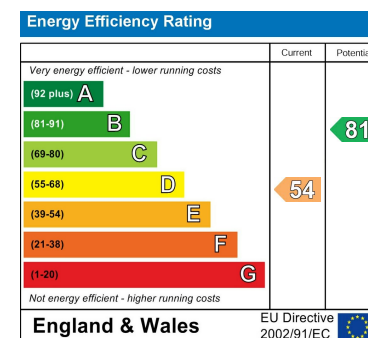
North Herts Council

**TENURE****COUNCIL TAX BAND**

E

**VIEWINGS**

By prior appointment only



Agents Note: Whilst every care has been taken to prepare these particulars, they are for guidance purposes only. All measurements are approximate and are for general guidance purposes only and whilst every care has been taken to ensure their accuracy, they should not be relied upon and potential buyers/tenants are advised to recheck the measurements

**OFFICE ADDRESS**

Putterills Lettings  
123 London Road  
Knebworth  
SG3 6EX

**OFFICE DETAILS**

01462 419333  
lettings@putterills.co.uk  
www.putterills.co.uk